

THE PENNSYLVANIA RAILROAD

-oOo-

Locomotive Maintenance Instructions No. L-11-D.

Supplement No. 1.
Issued Altoona, Pa.
April 26, 1930.

Instructions for Adjusting and Repairing Safety Valves used on
Locomotives and other Boilers.

All safety valves as they go through shops for repairs, as well as safety valves purchased new, shall be marked by steel stamp on the rim of the muffle dome to indicate the pressure range corresponding to the spring installed in valve for which the valve is suited.

EXAMPLE: A 5" Coale Muffle safety valve equipped with 5-E spring shall be stamped "Pressure range 240-280 lbs."

It will not be necessary to indicate the actual working pressure for which the valve is set, such pressure being controlled by the locomotive in question and corresponding to pressure shown on boiler washout cards.

F. W. HANKINS,

Chief of Motive Power.

THE PENNSYLVANIA RAILROAD

-o00o-

Locomotive Maintenance Instructions No. L-11-D.

Supplement No. 1-B,
Issued Philadelphia, Pa.
February 10, 1943.

(Superseding Supplement No. 1-A, Dated January 8, 1943.)

Instructions for Adjusting and Repairing Safety Valves Used
on Locomotives and Other Boilers.

All safety valves as they go through shops for repairs, as well as safety valves purchased new, shall be marked by steel stamp on the rim of the muffler dome to indicate the pressure range corresponding to the spring installed in valve for which the valve is suited.

EXAMPLE: A 5" Coale Muffler safety valve equipped with 5-E spring shall be stamped "Pressure range 230-250 lbs."

It will not be necessary to indicate the actual working pressure for which the valve is set, such pressure being controlled by the locomotive in question and corresponding to pressure shown on boiler washout cards.

When safety valves are not equipped with muffler domes, stenciling for pressure range and spring size shall be applied at side of spring case hub.

H. W. Jones,

Chief of Motive Power.

PENNSYLVANIA RAILROAD SYSTEM

Locomotive Maintenance Instructions No. L-11-D

(Superseding Instructions No. L-11-C, Dated December 23, 1921.)

ISSUED ALTOONA, PA.
JULY 20, 1925.

Instructions for Adjusting and Repairing Safety Valves Used on Locomotive and Other Boilers

The various parts of all safety valves must conform to standard tracings showing these details.

SETTING SAFETY VALVES

Adjusting Opening Pressure: To set valve at desired pressure (See Figure 1, on page 2) slack off locknut and adjust spring bolt by use of special wrenches for this purpose. For more pressure screw down on spring bolt, and for less pressure unscrew spring bolt. When setting safety valves, two steam gauges must be used, and valves set to pressures as required by Circular No. 106 and Locomotive Maintenance Instructions L-19. After spring bolt is adjusted, lock nut must be tightened.

Adjusting Closing Pressure: To regulate the pressure at which valve closes (blow back), remove adjusting ring retaining bolt and by means of any pointed instrument move adjusting ring. Valves should be adjusted to give a blow back of five (5) pounds. If the valve closes with too great a drop in boiler pressure, move the adjusting ring to the left a notch or two at a time; if the valve closes with too small a drop in boiler pressure, move ring to the right. After adjustment, replace adjusting ring retaining bolt, being careful that it enters one of the notches in adjusting ring, and then screw it firmly into place. Its omission or improper application may seriously affect the operation of the valve.

To Examine Inside of Valve: To examine inside of valve, unscrew locknut and slack-off spring bolt to relieve tension on spring, then unscrew dome and spring case when the internal arrangement of the valve will be exposed.

Removing Safety Valve from Boiler: Do not use hammer, set, pipe or alligator wrench to remove safety valve from its fitting on the boiler. Use special solid wrenches for this purpose. as shown on standard tracings.

COALE MUFFLED SAFETY VALVE—LOCOMOTIVE TYPE

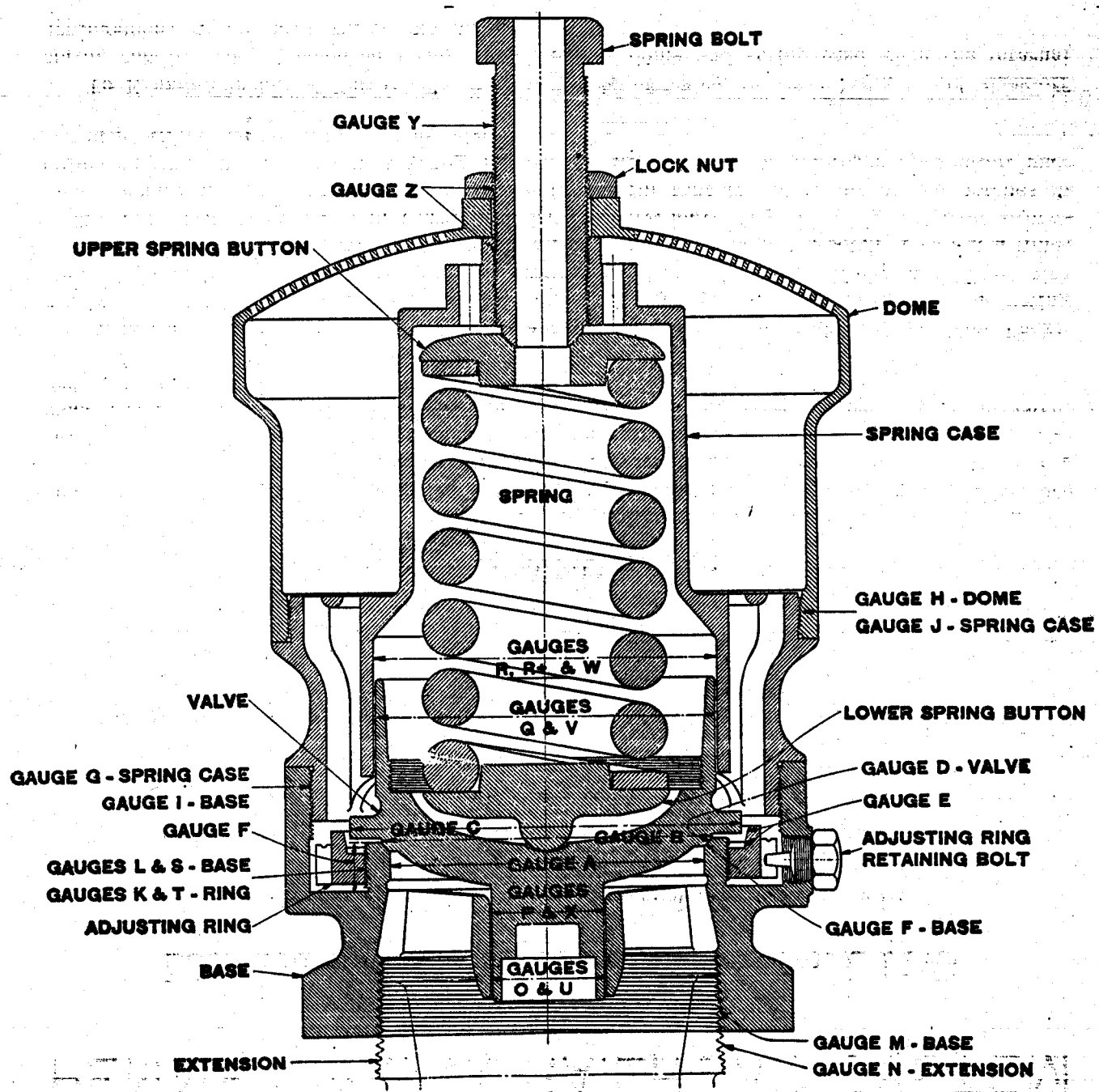


FIGURE 1

COALE SAFETY VALVE—STATIONARY BOILER TYPE

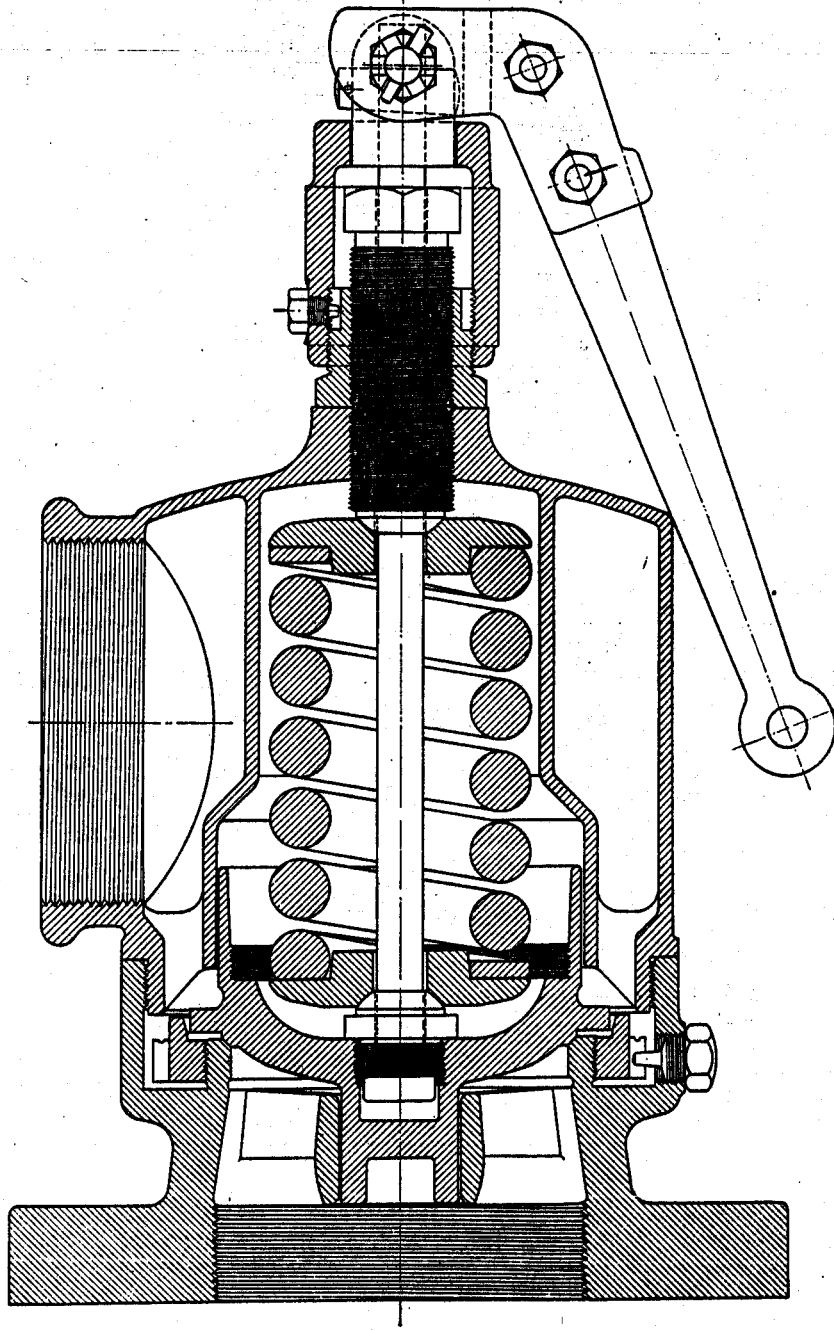


FIGURE 2

COALE MUFFLED SAFETY VALVE—LOCOMOTIVE TYPE
APPLICATION OF SPECIAL TOOL FOR HYDROSTATIC BOILER TESTS

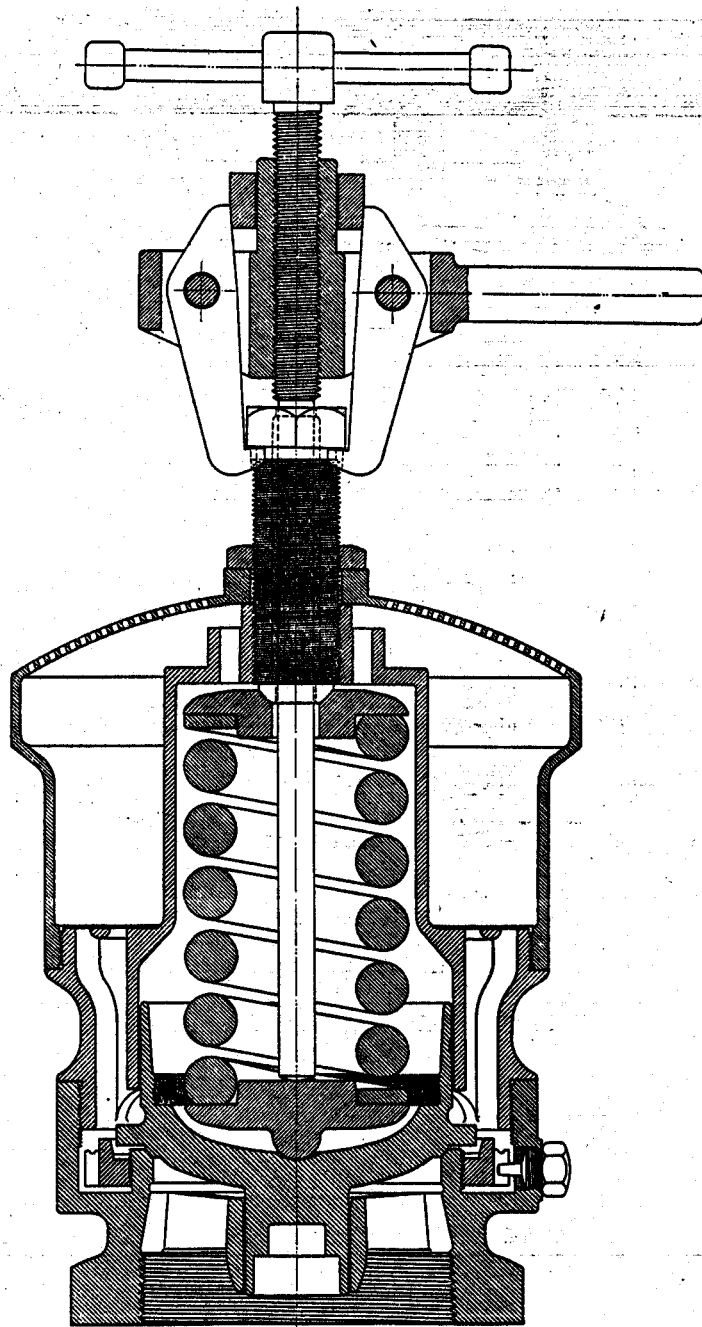


FIGURE 3

COALE SAFETY VALVE—STATIONARY BOILER TYPE
APPLICATION OF SPECIAL TOOL FOR HYDROSTATIC BOILER TESTS

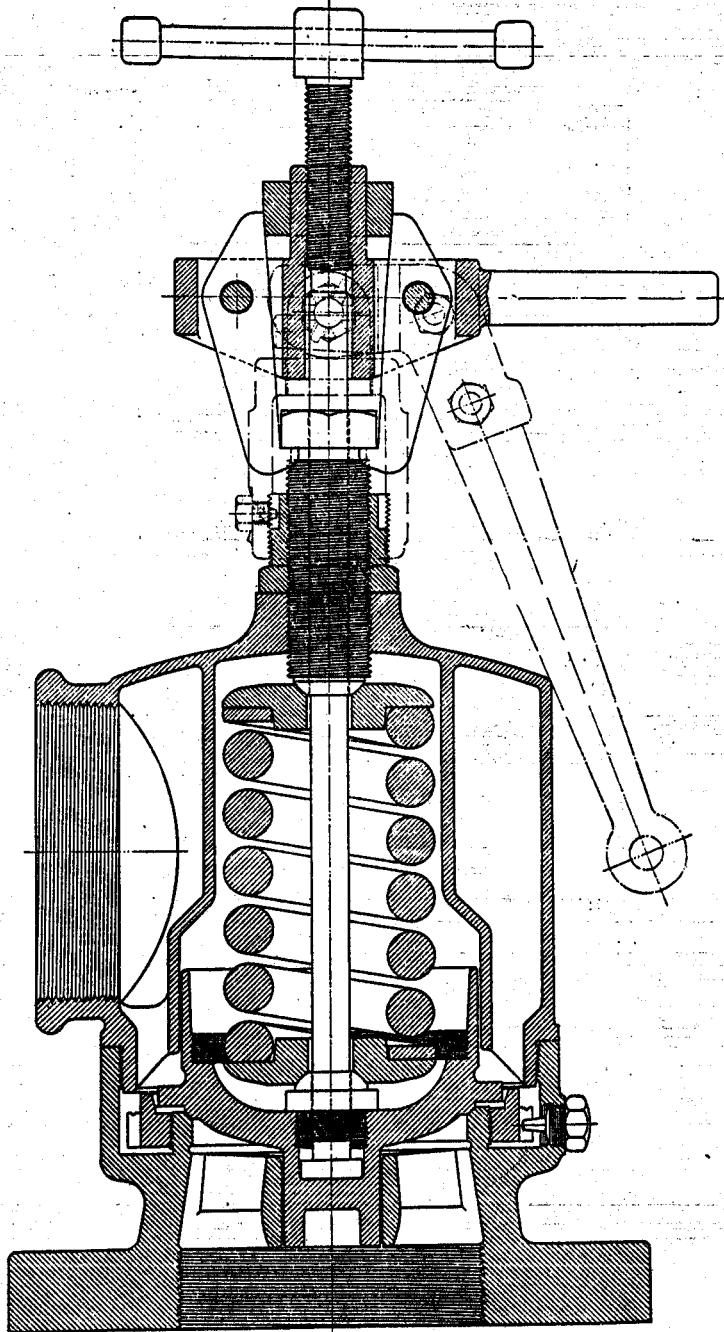


FIGURE 4