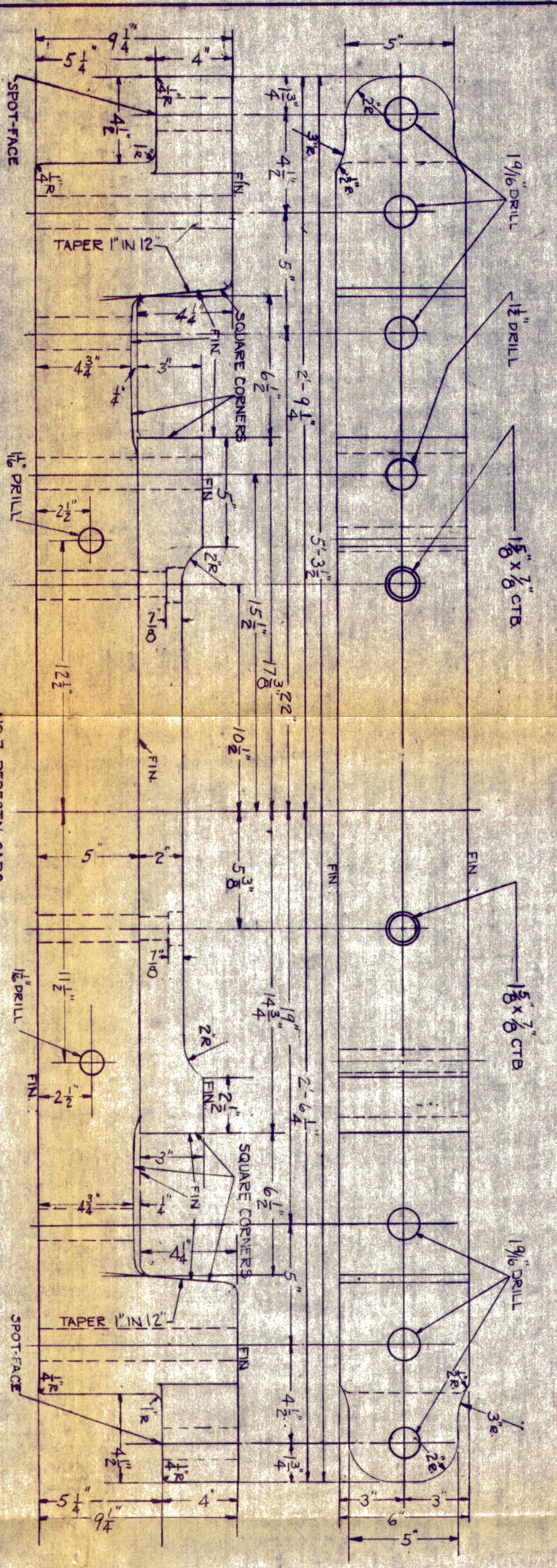
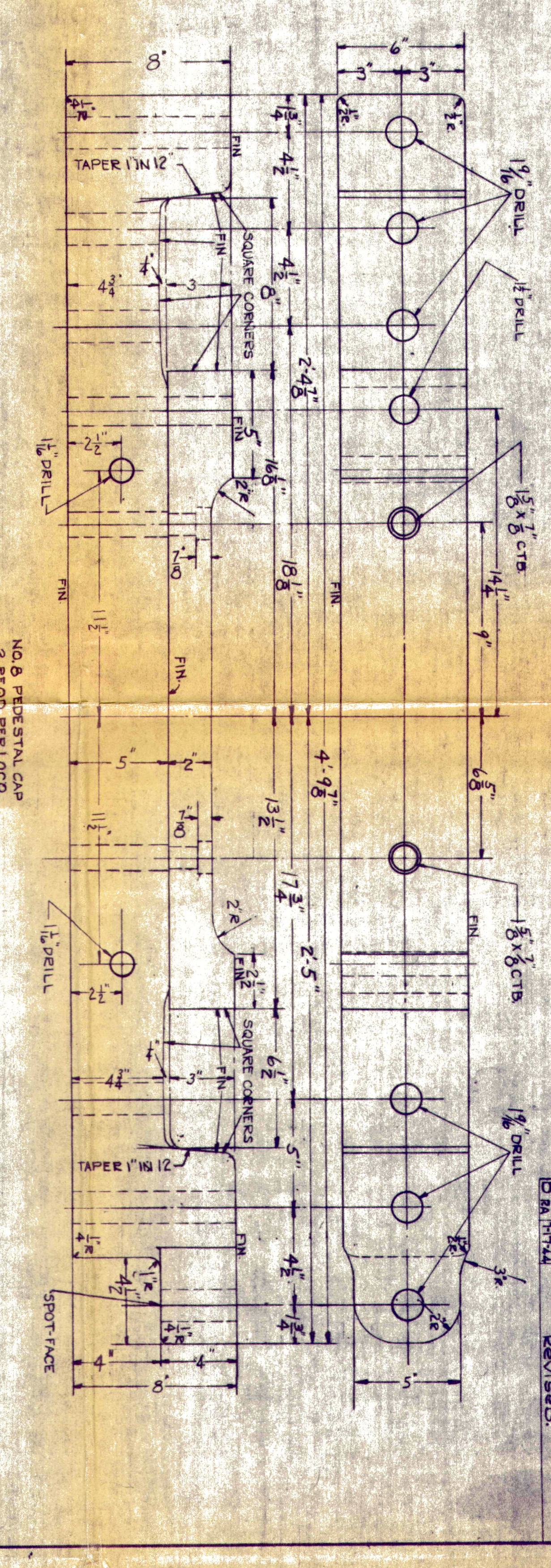


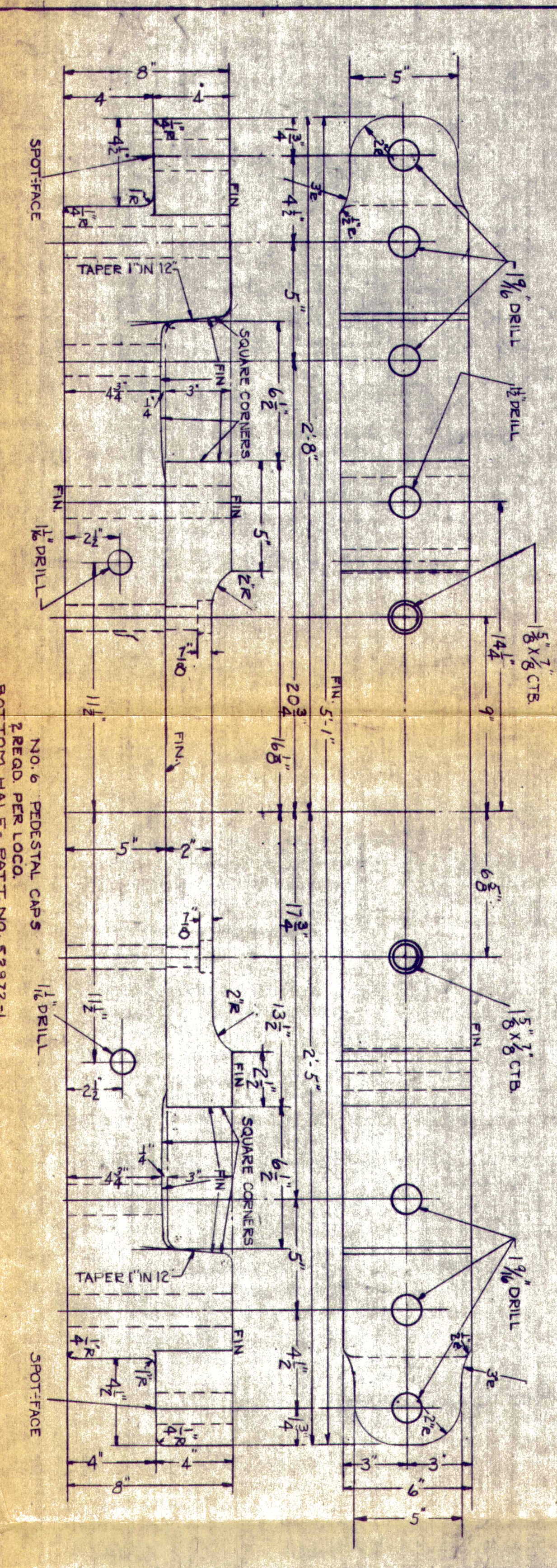
REVISION	DATE	BY	REVISION
1	12/1/40	AW	REVISED
2	12/1/40	AW	REVISED



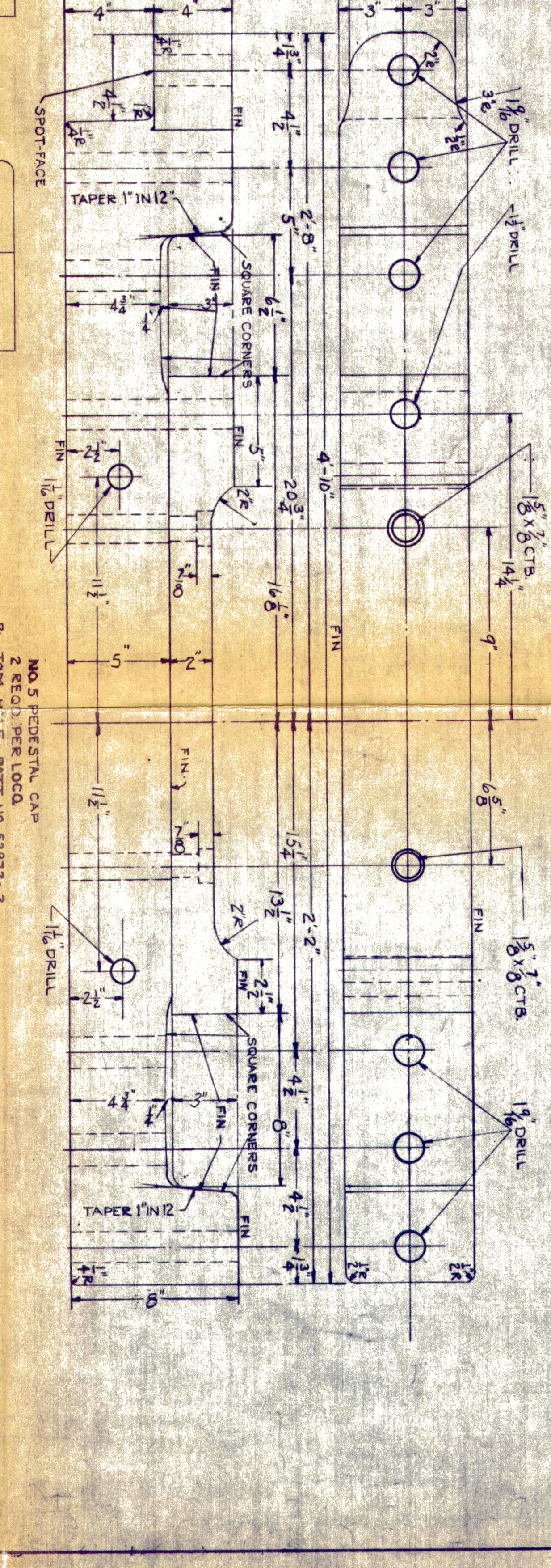
NO. 7 PEDESTAL CAP
2 REED PER LOCO
BOTTOM HALF - PATT. NO. 52972-4
TOP HALF - PATT. NO. 52972-5



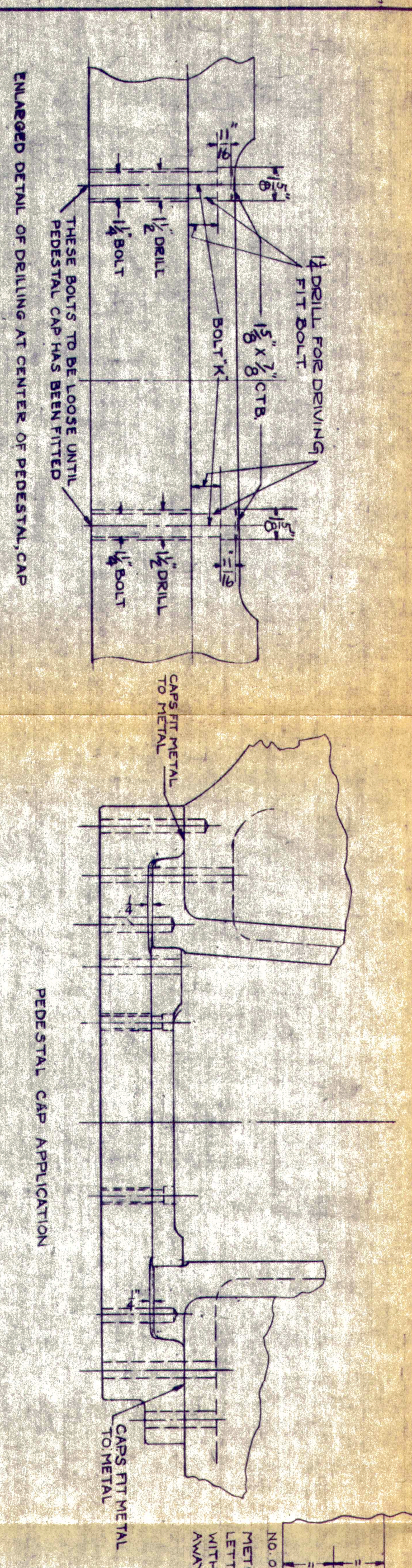
NO. 8 PEDESTAL CAP
2 REED PER LOCO
BOTTOM HALF - PATT. NO. 52972-3
TOP HALF - PATT. NO. 52972-3



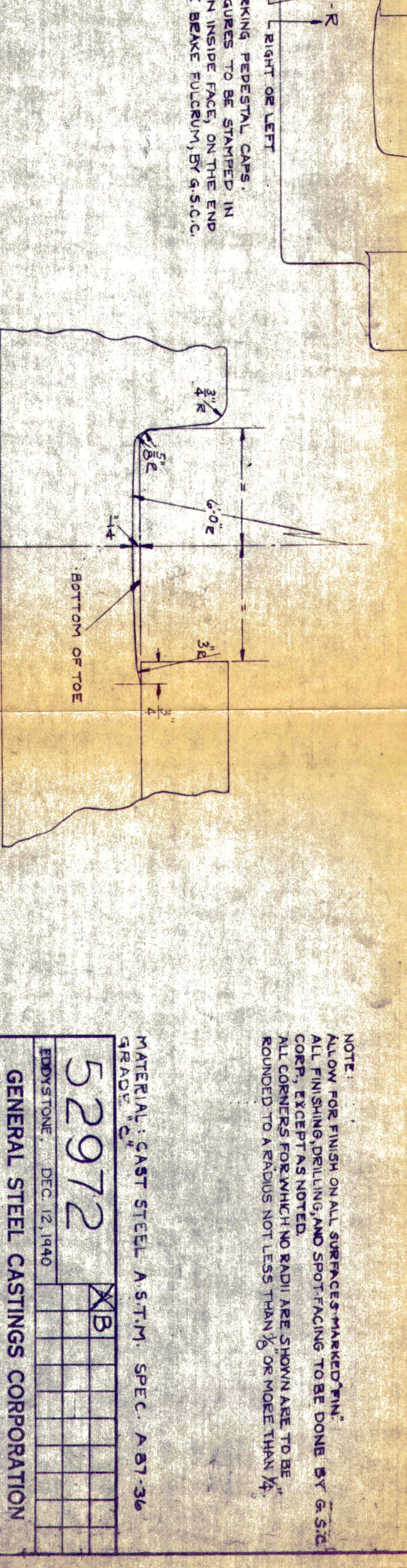
NO. 6 PEDESTAL CAP
2 REED PER LOCO
BOTTOM HALF - PATT. NO. 52972-1
TOP HALF - PATT. NO. 52972-6



NO. 5 PEDESTAL CAP
2 REED PER LOCO
BOTTOM HALF - PATT. NO. 52972-2
TOP HALF - PATT. NO. 52972-6



ENLARGED DETAIL OF DRILLING AT CENTER OF PEDESTAL CAP



ENLARGED DETAIL OF CAP AT PEDESTAL TOE

THIS DRAWING IS PROPERTY OF
GENERAL STEEL CASTINGS CORPORATION
AND MUST NOT BE COPIED OR REPRODUCED
WITHOUT PERMISSION OF THE COMPANY
PATENTED

MATERIAL: CAST STEEL, A.S.T.M. SPEC. A-37-36
GRADE: C
52972
EMERSON, DEC. 12, 1940
GENERAL STEEL CASTINGS CORPORATION
EDDYSTONE, PA.
GRANITE CITY, ILL.
PEDESTAL CAPS
FOR
UNION EXCIFIC
4-B-B-4 TYPE LOCO. LOCO. BED DRAWING: 52971 REVISION
PED. CAP BOLT DRG. 52973
PATENTED

NO. OF PEDESTAL: 1 RIGHT OR LEFT
METHOD OF MARKING PEDESTAL CAPS.
LETTERS AND FIGURES TO BE STAMPED IN
PLAIN 16 STAINLESS STEEL OR 6 S.I.C.
MARK FROM THE BRACE FULCRUM, BY 6 S.I.C.

NOTE:
ALLOW FOR FINISH ON ALL SURFACES MARKED "FIN".
ALL FINISHING, DRILLING AND SPOT-FACING TO BE DONE BY 6 S.I.C.
CORP., EXCEPT AS INDICATED.
ALL DIMENSIONS AND RADII ARE SHOWN AND TO BE
ROUNDED TO A FRACTION NOT LESS THAN 1/16 OR MORE THAN 1/4.