

CHRIS AHRENS  
FROM COLLECTION OF  
STE A

NATHAN MFG CO NEW YORK  
TABLE OF INTERCHANGEABLE PARTS  
FOR BOILER CHECKS

DESIGNATION OF PARTS	BOILER CHECK TYPE 280A		BOILER CHECK TYPE 287A		BOILER CHECK TYPE 287A PLANGED CONNECTION		BOILER CHECK TYPE F.W.R.		BOILER CHECK TYPE F.W.S.		BOILER CHECK TYPE F.W.C.		BOILER CHECK TYPE 19/3		DOUBLE BOILER CHECK TYPE G		DOUBLE BOILER CHECK TYPE H		DOUBLE BOILER CHECK TYPE M		DOUBLE BOILER CHECK TYPE T		DOUBLE BOILER CHECK TYPE F.M.P.		DOUBLE BOILER CHECK TYPE F.M.T.				
	PART NO. CATALOGUE REFERENCE	QTY	PART NO. CATALOGUE REFERENCE	QTY	PART NO. CATALOGUE REFERENCE	QTY	PART NO. CATALOGUE REFERENCE	QTY	PART NO. CATALOGUE REFERENCE	QTY	PART NO. CATALOGUE REFERENCE	QTY	PART NO. CATALOGUE REFERENCE	QTY	PART NO. CATALOGUE REFERENCE	QTY	PART NO. CATALOGUE REFERENCE	QTY	PART NO. CATALOGUE REFERENCE	QTY	PART NO. CATALOGUE REFERENCE	QTY	PART NO. CATALOGUE REFERENCE	QTY	PART NO. CATALOGUE REFERENCE	QTY	PART NO. CATALOGUE REFERENCE		
CHECK VALVE BODY	1	A	1	4	1	4	1	F	21	H	E1	J	1	K	A	1	L	M	N	1	P	9	1	R	3	1	T	7	
BODY NUT																													
CAP (INJECTOR SIDE)																													
CAP (PUMP SIDE)																													
VALVE SEAT	3	AV	AP	AV	AT	AV	22	AV	22	AV	22	AV	22	AV	22	AV	22	AV	22	AV	22	AV	22	AV	22	AV	22	AV	22
VALVE STOP																													
VALVE (INJECTOR SIDE)	2	BH	BJ	BK	2	BL	BN	2	BM	2	BO	2	BP	2	BQ	2	BR	2	BS	2	BT	2	BU	2	BV	2	BW	2	BX
VALVE (PUMP SIDE)																													
VALVE SPRING																													
BASKET																													
DEBRIS PLUG																													
STUDS																													
NUTS																													
STOP VALVE BODY	7	CE	CF	CG	7	CH	CH	7	CI	7	CJ	7	CK	7	CL	7	CM	7	CN	7	CO	7	CP	7	CQ	7	CR	7	CS
DISC																													
DISC NUT																													
LOCK WARE																													
SPINDLE	8	CV	CW	CX	8	CY	CZ	8	CA	8	CB	8	CC	8	CD	8	CE	8	CF	8	CG	8	CH	8	CI	8	CJ	8	CK
HAND WHEEL																													
ANDOS																													
ANDOS PIN																													
BONNET	6	DL	DM	DN	6	DO	DP	6	DQ	6	DR	6	DS	6	DT	6	DU	6	DV	6	DW	6	DX	6	DY	6	DZ	6	EA
GLAND																													
PACKING NUT	6	EC	ED	6	EE	6	EF	6	EG	6	EH	6	EI	6	EJ	6	EK	6	EL	6	EM	6	EN	6	EO	6	EP	6	EQ
BOILER FLANGE																													
STUD																													
NUT																													
BALL JOINT	11	FB	FC	11	FD	11	FE	11	FF	11	FG	11	FH	11	FI	11	FJ	11	FK	11	FL	11	FM	11	FN	11	FO	11	FP
BODY FLANGE (DELIVERY END)																													
COMPANY FLANGE																													
BOLT																													
NUT																													
COMPANY FLANGE																													
BOLT																													
NUT																													
BALL JOINT	9	GA	GB	9	GC	9	GD	9	GE	9	GF	9	GG	9	GH	9	GI	9	GJ	9	GK	9	GL	9	GM	9	GN	9	GO
COUPLING NUT																													
TRAIL PIECE (INJECTOR SIDE)	10	GP	GH	10	GI	10	GJ	10	GK	10	GL	10	GM	10	GN	10	GO	10	GP	10	GQ	10	GR	10	GS	10	GT	10	GU
TRAIL PIECE (PUMP SIDE)																													
ELBOW																													
SAFETY VALVE																													
CAGE SCREEN																													
VALVE SEAT SET SCREEN																													
LOCK NUT																													
RIR COCKS																													

WHERE EVER THE SAME SYMBOL APPEARS BELOW PART ARE INTERCHANGEABLE

DRG. 4673

D13-F10

SV

MI-BIC-A

LINE No.	FIG. No.	DESCRIPTION	USED ON	DRAWING NO. ADVISORY MECH. COMM. NATHAN M'F'G. CO.	LIFT
1.	1	2" COMB. BOILER CHECK & STOP VALVE - C.&O. RY. $\frac{5}{8}$ " P 24109	INJECTOR	26-3-90 2481	$\frac{3}{8}$ "
2.	1	2 $\frac{1}{2}$ " " " " - C.&O. RY. $\frac{5}{8}$ " P 23805	F.W. PUMP	26-3-95 -	$\frac{5}{32}$ "
3.	1	2 $\frac{1}{2}$ " " " " - C.&O. RY. $\frac{5}{8}$ " P 23810	INJECTOR	26-3-94 -	$\frac{5}{8}$ "
4.	1	2" " " " - ERIE R.R. $\frac{5}{8}$ " P 26042-D	"	-	$\frac{5}{8}$ "
5.	1	2 $\frac{1}{2}$ " " " " - ERIE R.R. $\frac{5}{8}$ " P 26264-C	F.W. PUMP	-	$\frac{9}{32}$ "
6.	1	2 $\frac{1}{2}$ " " " " - ERIE R.R. $\frac{5}{8}$ " P 26267-C	INJECTOR	-	$1\frac{1}{16}$ "
7.	2	2 $\frac{1}{2}$ " DOUBLE BOILER CHECK - ERIE R.R.	PUMP SIDE INJ. SIDE	- 2503	$\frac{1}{8}$ " $\frac{3}{8}$ "
8.	2	2 $\frac{1}{2}$ " TYPE F.W.P. DOUBLE BOILER CHECK - P. M. RY.	PUMP SIDE INJ. SIDE	- 2229	$\frac{1}{8}$ " $\frac{3}{8}$ "
9.	2	2" TYPE "TA" " " - C.&O. RY.	INJECTOR INJECTOR	- 1705	$\frac{3}{8}$ " $\frac{3}{8}$ "
10.	2	3" TYPE 287-A BOILER CHECK - N.Y.C. & ST. L. RY.	INJECTOR	- 2872	$\frac{5}{8}$ "

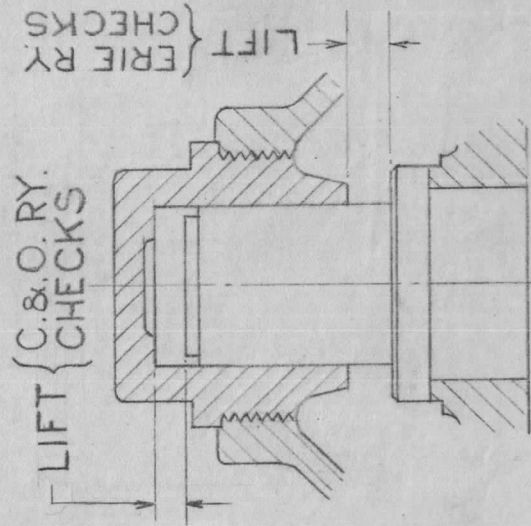


FIG. NO. 1.

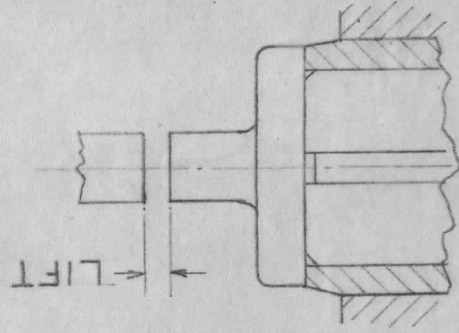


FIG. NO. 2.

SPECIAL FOR ADVISORY MECHANICAL COMMITTEE  
C. & O. RY. Co.  
N.Y., CH. & ST. L. R. R. Co. PERE MARQUETTERY Co.  
ERIE R. R. Co.  
PERE MARQUETTERY Co.

NATHAN M'F'G. Co., NEW YORK, N.Y.

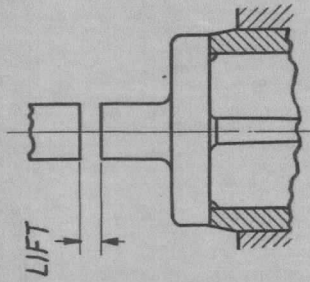
# LIFTS FOR BOILER CHECKS

3612

JUNE 18, 1936

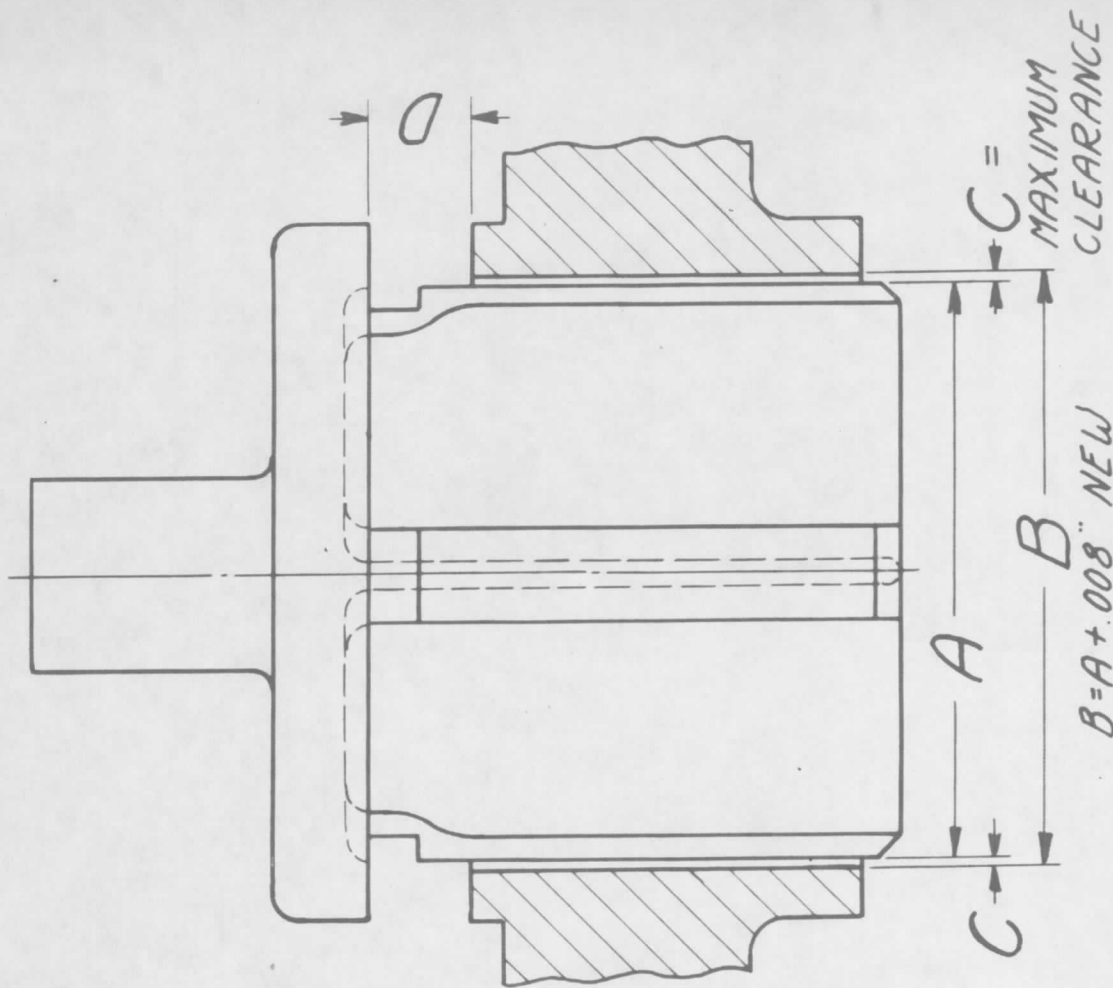
TYPE	LIFT			
	1 1/2" SIZE	2" SIZE	2 1/2" SIZE	3" SIZE
REVERSIBLE BOILER CHECK- 287-A	1" / 4	5" / 16	1" / 16	3" / 4
REVERSIBLE BOILER CHECK- F.W.R.		1" / 8	3" / 16, 9" / 16	3" / 16, 5" / 8
BOILER CHECK- F.W.S.			3" / 16, 9" / 16	3" / 16, 5" / 8
BOILER CHECK-1918 A B C		5" / 16	3" / 8	3" / 4
DOUBLE BOILER CHECK- F.W.P.			PUMP SIDE: 3" / 16, 9" / 16; INJECTOR SIDE: 3" / 8	PUMP SIDE: 3" / 16, 5" / 8; INJECTOR SIDE: 1" / 2

⊕ INDICATES FOR USE WITH RECIPROCATING FEED WATER PUMP  
 ○ INDICATES FOR USE WITH CENTRIFUGAL FEED WATER PUMP



NO REG NIP OR DATE

965.76



GENERAL INFORMATION  
 BOILER CHECKS  
 CLEARANCE & LIFT  
 DEC. 18, 1931.

R. R.	TYPE OF CHECK	DIA. OF CHECK "A"	MAX. CLEARANCE "C"	LIFT "D"		USED	
				INJ.	F.W.H.	INJ.	F.W.H.